



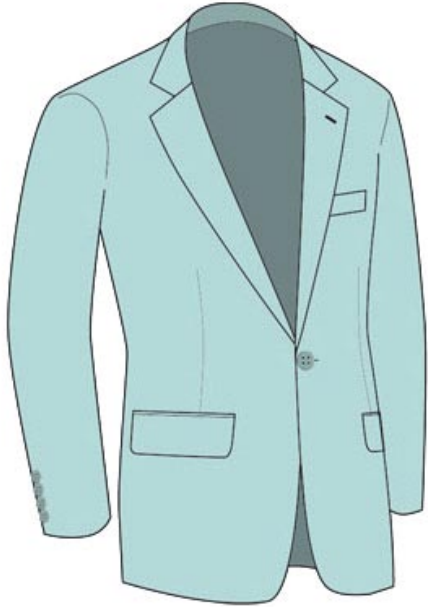
www.finestitch.com.au

Style
CATALOGUE



Jacket Button Style

Finestitch & Co.



The One Button Jacket

The one button style of jacket is normally worn as a standalone jacket to smarten up a casual look, and not part of a suit ensemble.

However, more and more fashion savvy individuals are introducing the one button jacket as part of a suit ensemble into the work place.

If wearing the one button jacket to class up an otherwise more casual look, lighter coloured fabrics would look best such as stone, white, light grey, sand, pale blue .

It can be worn with jeans, or a light coloured trouser, and with a light shirt or T-shirt inside.

If wearing the one button jacket as part of a suit - again light colours are preferred such as light grey, light blue and sand. Patterns such as pin stripe and window-pane with a light colour base would also be suitable.

The jacket length is normally shorter than a two or three button jacket to ensure correct proportion above and below the button which is located just below mid-way down the torso.



Jacket Button Style

Finestitch & Co.



The Two Button Jacket

The two button style of jacket would best suit a shorter man, but can look good on men of any height.

It is the style that is currently most in fashion, and a two button suit should be a part of your wardrobe.

The elongated frontal V of the two button jacket shows more shirt than the three button jacket, thus lengthening the line of the body.

A good choice to wear a waistcoat under, as the waistcoat will show even when the jacket is buttoned up - giving that sharp wallstreet investment banker look.

Any colours and any patterns will do with a two button suit - from dark colours such as navy, black, and charcoal for more formal occasions to light colours such as light grey, beige, and khaki for less formal workplaces and occasions - particularly events such as the Melbourne Cup.

Pinstripes, window-pane, chalk stripes, herringbone, nail-head or bird's-eye patterns all work with the two button.

The Cardinal Rule when wearing a two button jacket - be sure to always leave the lower button undone.



Jacket Button Style

Finestitch & Co.



The Three Button Jacket

The three button style of jacket is best for taller men - 6ft and above. The reason being that the frontal V is shortened due to the extra button, and hence would make a shorter man look even shorter.

It is a classic style that was more popular in the 90's, however there are many traditionalists around that still prefer the three button to the two button.

Pinstripes and chalk stripes work well for the three button as they help to elongate the figure and combat the three button's natural shortening effect - which is due to the shorter lapels and the smaller V, showing less of the shirt.

The rule for wearing the three button jacket is to leave the lowest button undone.

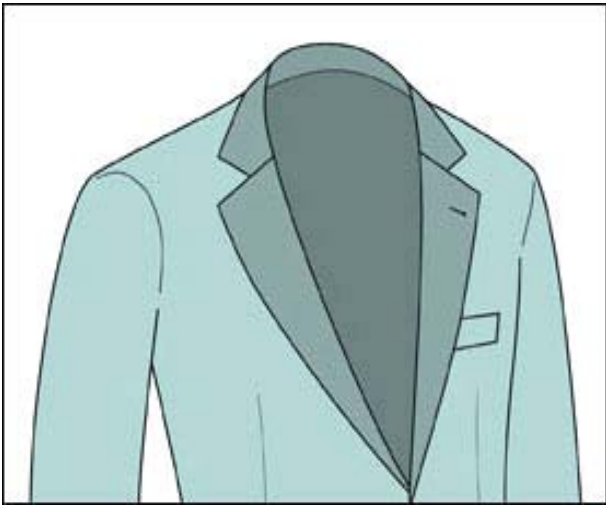
However a variation of this is to tell your drycleaner to roll the lapel over the top button so you can wear the jacket with the top button undone, hence elongating the frontal V.

The jacket will then look similar to a two button, however it will have that extra button at the top just under the fold of the right lapel, and the button hole just under the fold of the left lapel.



Jacket Lapel Style

Finestitch & Co.



The Notch Lapel

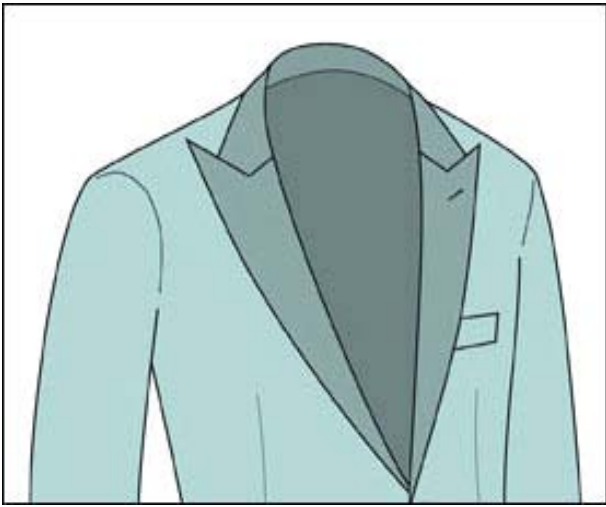
The name 'notch' is given due to the appearance of a notch being cut out of the lapel.

The notch lapel is the most commonly seen lapel for blazers and is the standard lapel acceptable for jackets that are to be worn at work as part of a suit, sports jackets, smart casual jackets and even leather jackets.



Jacket Lapel Style

Finestitch & Co.



The Peak Lapel

The name 'peak' is given due to the appearance of the points of the lapel arriving at a peak at the top near the shoulders.

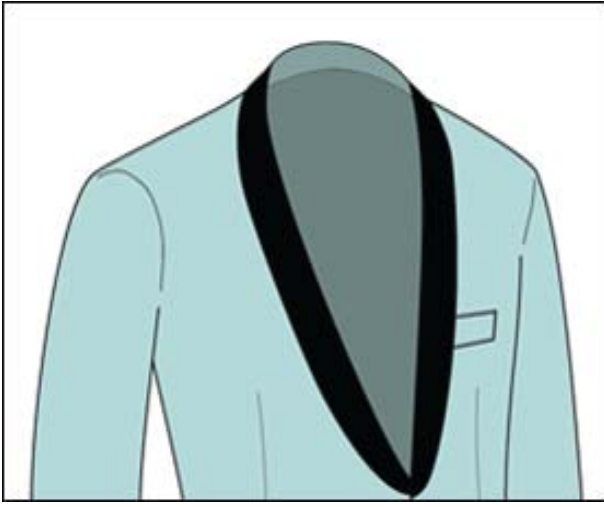
Solid colours and pin stripes are recommended for a jacket with peak lapels.

Commonly found on more formal clothes such as tuxedos, more and more people have started wearing peak lapelled suits to work.



Jacket Lapel Style

Finestitch & Co.



The Shawl Lapel

The shawl lapel is a continuous curve with no angles and is commonly found on more formal clothes such as dinner jackets (tuxedos) - often with a satin finish over the lapel.

Generally found on an all white jacket (pictured) or an all black jacket; a contrast of black lapel on a white jacket is also quite elegant and appealing.

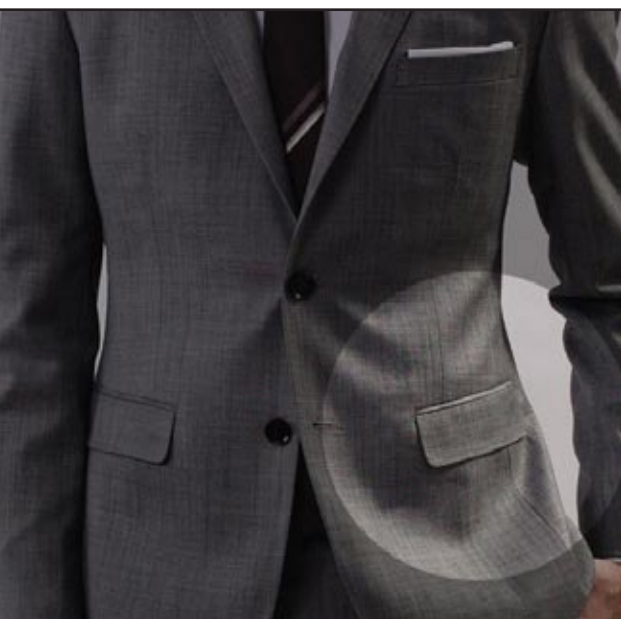


Jacket Pocket Style

Finestitch & Co.

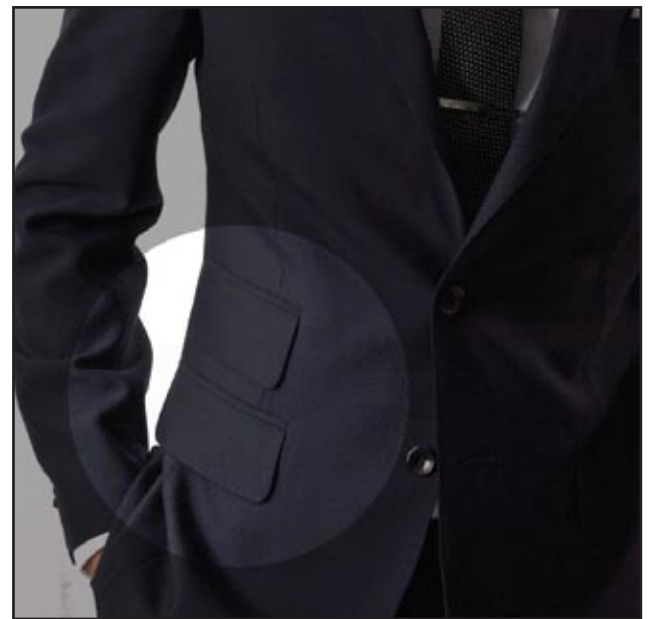
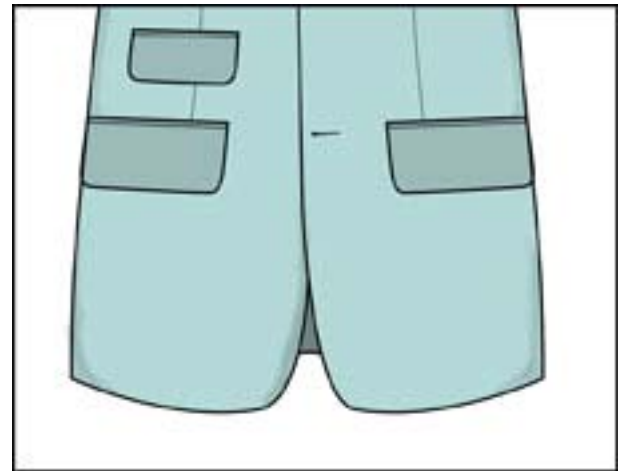
Straight Pockets

This is the standard style seen on most jackets - if you're the conservative type, this is probably the option for you.



Straight Pockets with ticket pocket variation

Located just above the right pocket and roughly half the width, the ticket pocket was originally used for storing train tickets, but is now more for trend as opposed to utility.

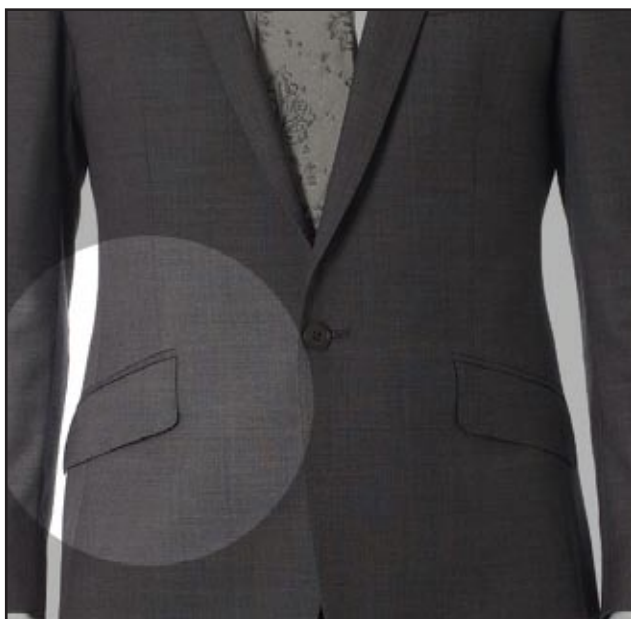


Jacket Pocket Style

Finestitch & Co.

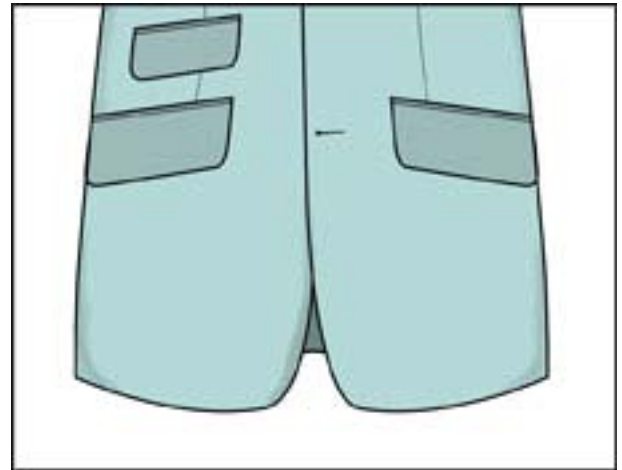
Slant Pockets

Add slant pockets to a jacket to give it a more streamline appearance, drawing the eye down the body as opposed to across the body.



Slant Pockets with ticket pocket variation

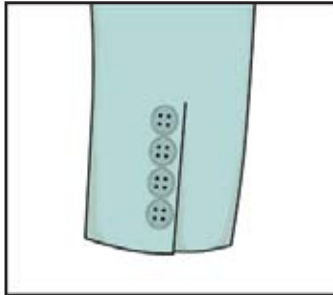
Located just above the right pocket and roughly half the width, the ticket pocket was originally used for storing train tickets, but is now more for trend as opposed to utility .



Jacket Cuff Style

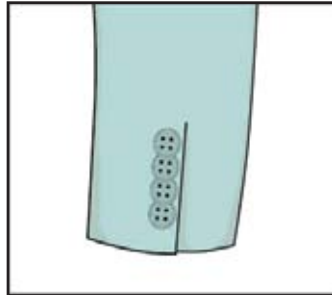
Finestitch & Co.

No Button Holes



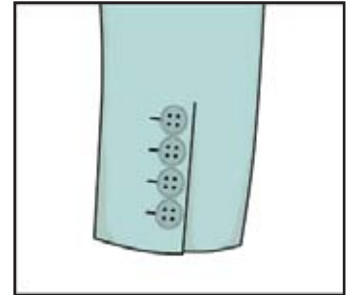
This is the default style included in all suits.

Overlapped Buttons



The buttons may be overlapped to add a unique touch.

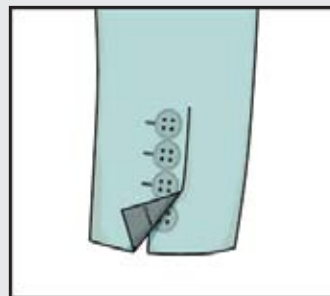
False Button Stitching



False stitching gives the appearance of button holes, however the buttons do not actually work and cannot be opened.

Working Buttons (Surgeon's Cuffs)

Working button holes on the cuff of a suit, also known as "Surgeon's Cuffs", are a mark of a high-quality tailor made suit, and require considerably more work on the jacket. At Finestitch we offer this as an option for the discerning customer that wishes to differentiate their garment from the off-peg suits.



Jacket Stitching Style

Finestitch & Co.

Symbol of Custom Craftsmanship

All Finestitch & Co suits are hand made by our Master Tailors. But for men that want to add that extra-exclusive prestigious touch, Finestitch custom suits are available with hand craft top stitching around the lapels, pockets, and edges of the suit jacket.

Top stitching is recognized as a symbol of a skilfully hand-tailored custom suit, as a Master Tailor inserts each stitch by hand and takes extra care to ensure that each stitch is the same width apart - a skill developed over years of practice to ensure a high level of precision.

Hand Craft Top Stitching



Standard Stitching



Jacket Vent Style

Finestitch & Co.

Jacket Vents



Single Vent

The single or center vent is more often chosen by slimmer men, with side vents being the choice for larger men or men with larger posteriors. However, the current trend for suit jackets is to have side vents regardless of size.

For more tightly fitted jackets, it is safer to have side vents, because with a single vent there is the danger of a split showing in the center.



Double Vents

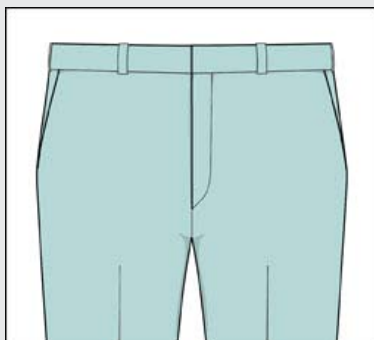


Trouser Styles

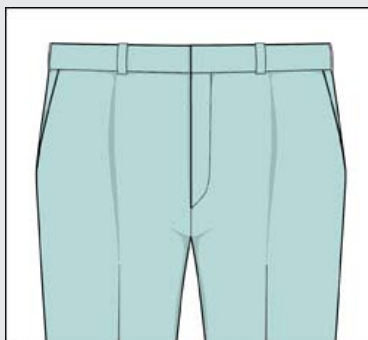
Finestitch & Co.

Pleat Style

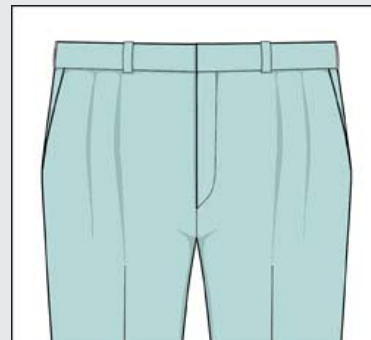
Flat Front



Single Pleat



Double Pleat



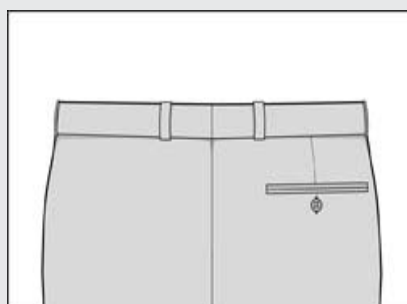
Flat front has the most visually appealing look as it is streamlined - suiting slimmer men as it is a slightly tighter fit than the other styles of trouser fronts.

Single pleat style allows slightly more give than the flat front, and is a more comfort-oriented style.

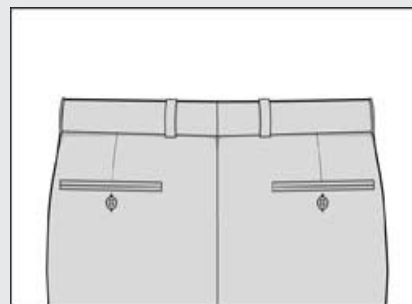
Double pleats are for larger men that require more give in their trouser, and is very comfort oriented - giving a baggier appearance to the trouser.

Back Pocket Style

One on the Right



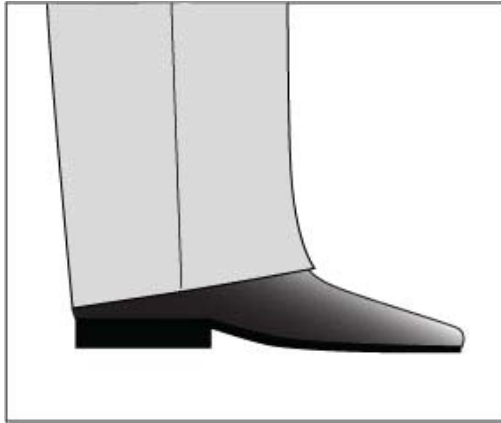
Two Pockets



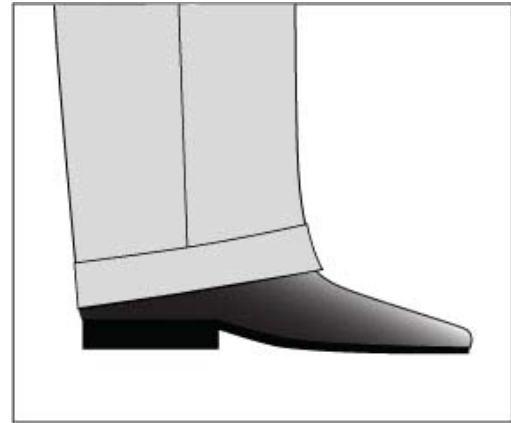
Trouser Cuff Style

Finestitch & Co.

No Cuff



1.5" Cuff



The no cuffs style is the more modern look - especially when coupled with a flat front trouser - giving a streamlined appearance.



Older gentlemen may prefer a trouser with cuffs as it is a more traditional look.

Shorter men should avoid cuffs as it makes them look even shorter.

Trouser Lining Style

Finestitch & Co.

Off-the-peg trousers are almost always half-lined and only at the front. The seat of the trouser is where the most reinforcement is required as that is where most of the wear and tear occurs, yet the seat is never lined!

At Finestitch & Co, we line the trouser on the front as well as the seat to provide extra re-inforcement and ensure a longer lifespan of the trouser.

We also offer the option of full lining so the trouser is not only lined front and back, but also from top to bottom.

To get the most use out of trousers - we recommend investing in two trousers and alternating them every time the suit is worn.

Half Lining



Full Lining



Vest Style *Finestitch & Co.*

Vest Neck Style



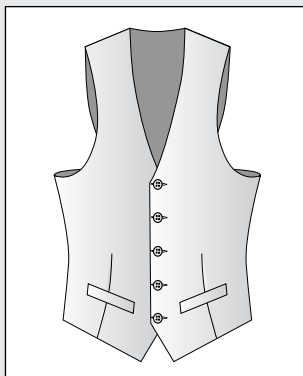
U-Neck



V-Neck

Vest Button Style

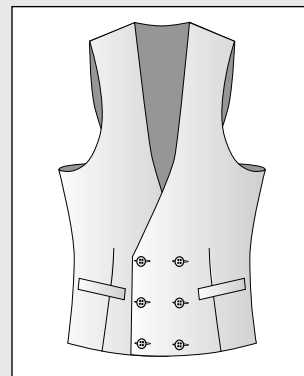
Single Breasted



Choose from:

- 4 Button
- 5 Button (pictured above)
- 6 Button

Double Breasted



Choose from:

- 4 Button
- 6 Button (pictured above)
- 8 Button

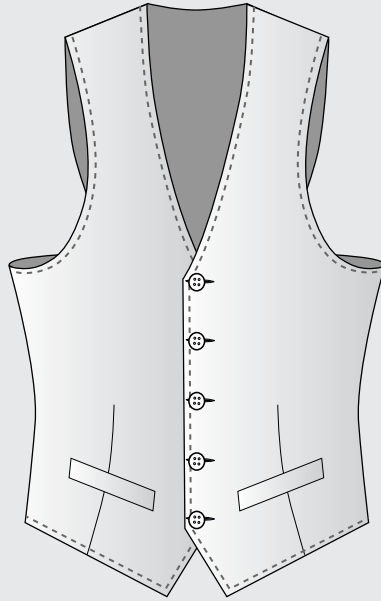
Vest Style *Finestitch & Co.*

Vest Stitching Style

Hand Craft Stitching

To match the hand craft stitching on your suit jacket, you may opt to have your vest detailed with hand craft stitching as well.

It adds an element of prestigious bespoke tailoring that sets it apart from a standard vest.



Vest Back Style

Back in Black Satin



By default the back of the vest is black satin, with a buckle adjuster for tightening the fit if desired.

Back - Same as Internal Lining



As an option, one may wish to have the back the same as the lining inside the vest, or even a different lining altogether. We have a vast range of exquisite patterned linings to choose from for added flair!

Shirt Collar Style

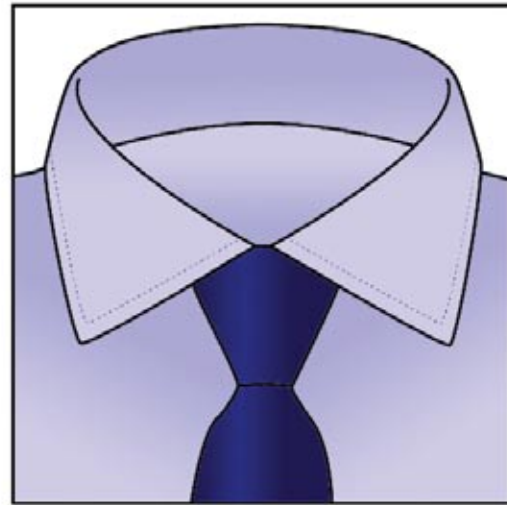
Finestitch & Co.

The Collar plays a key defining role in the overall look of a shirt. The English Cutaway and Wide Spread styles are best suited for larger tie knots such as the Full Windsor.

Finestitch & Co shirts have thick collars to ensure that they maintain their shape longer, and removable collar-stays help ensure that the collar stays upright.



English Cutaway Collar



Wide Spread Collar

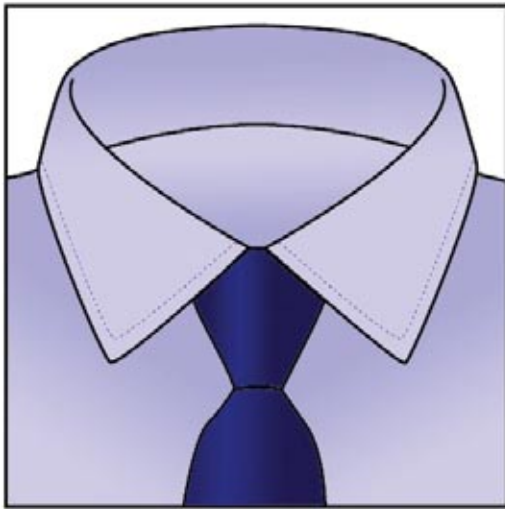


Shirt Collar Style

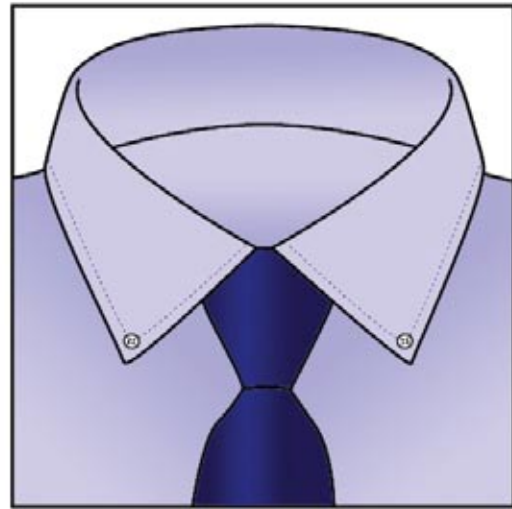
Finestitch & Co.

The Regular Spread Business Collar is best suited for medium and smaller tie knots such as the half-windsor knot or four-in-hand knot - a common choice for the workplace.

The Button-Down variation is not as popular in the workplace, but works well for going out if on a check or gingham shirt with a solid-colour narrow tie. This smart-casual look is finished with a sports jacket or blazer.



**Regular Spread
Business Collar**



**Regular Spread
Button-Down Collar**



Shirt Pocket Style

Finestitch & Co.



To a large extent, pockets on business shirts have become quite outdated.

The rule to follow is that if you don't need to carry a pen around with you, don't get a shirt pocket. Pockets are only for those that require the utility such as doctors.

A pocketless shirt has a more streamlined appearance and looks much sharper.



No Pocket



Left Pocket

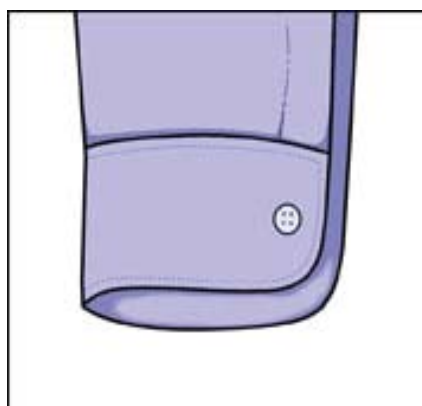
Shirt Cuff Style

Finestitch & Co.

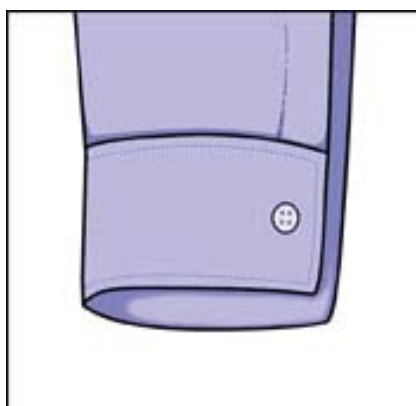


Shirt cuff styles can vary from the more formal French Cuff to the more practical Regular Cuff - which in Finestitch shirts has two button settings for loosening or tightening the cuff to cater for watches with large dials.

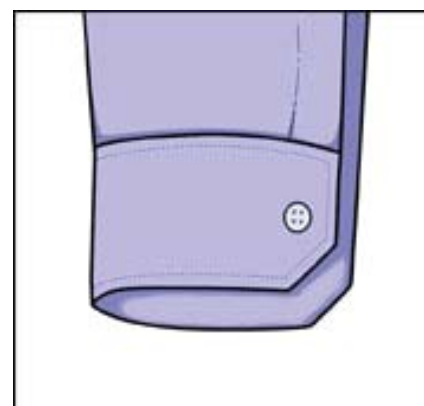
Finestitch & Co. shirts come with thick cuffs (unless otherwise requested) - a signature of good quality business and formal shirts. The style of cuff can also vary with shape such as round, square or angle - it all comes down to individual taste.



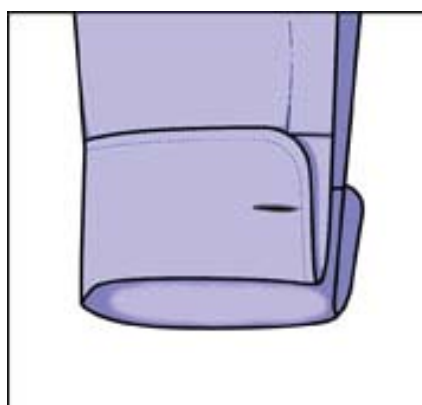
Regular Round



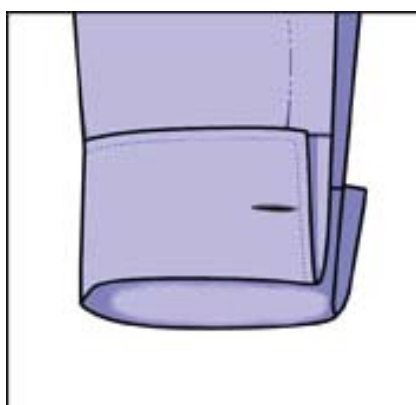
Regular Square



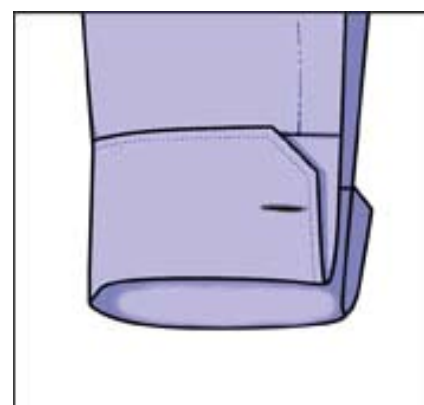
Regular Angle



French Round



French Square



French Angle



The End

Finestitch & Co.

LUXURY CUSTOM SUITING

www.finestitch.com.au